



KIT LUBE



DISPENSERS



PUMPS



METERS



NOZZLE METERS



NOZZLES

# EASY OIL

## FEATURES

- BALANCED VALVE
- LIGHT PRESSURE LEVER
- ERGONOMIC GRAB
- BUILT-IN FILTER
- BUILT-IN LEVER LOCK
- COLOUR CODE SWIVEL

The Piusi Easy oil is a manual nozzle suitable for the delivery of a wide range of oils. Its ergonomic design and low weight make this nozzle unique in the market.



## PERFORMANCE

up to

**30 L/MIN**

(up to 7,8 gpm)

FLOW RATE

**70BAR**

PRESSURE



EASYOIL WITH FLEXIBLE SPOUT

without spout

with rigid spout



## PACKAGING

CODE	WEIGHT		PACKAGING			
	KG	LBS	MM	INCH	PCS/PALLET	PCS/BOX
FO096600A	0,45	1	203X320X88	8X12,6X3,5		1
FO0966130	1,2	2,6	203X320X88	8X12,6X3,5		1
FO0966140	1,2	2,6	203X320X88	8X12,6X3,5		1
FO0966150	1,2	2,6	203X320X88	8X12,6X3,5		1



WASTE OIL EQUIPMENTS



FILTRATION



FLUID MONITORING



HOSE REELS



ACCESSORIES



MERCHANDISE

## INDEX



AIR



ANTIFREEZE



AdBlue®



BIODIESEL



DIESEL



FOOD



GASOLINE



GREASE



KEROSENE



OIL

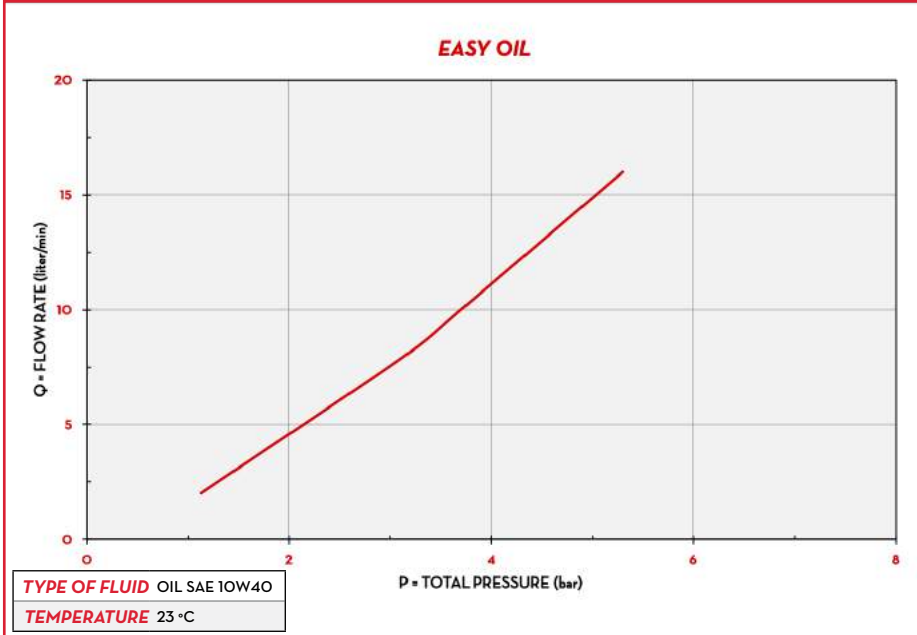


WATER



WINDSCREEN

## CHARTS



## IN THE BOX

- EASYOIL NOZZLE
- INSTRUCTION MANUAL

## DETAILS



1/2" OUTLET



SWIVEL 1/2 BSP

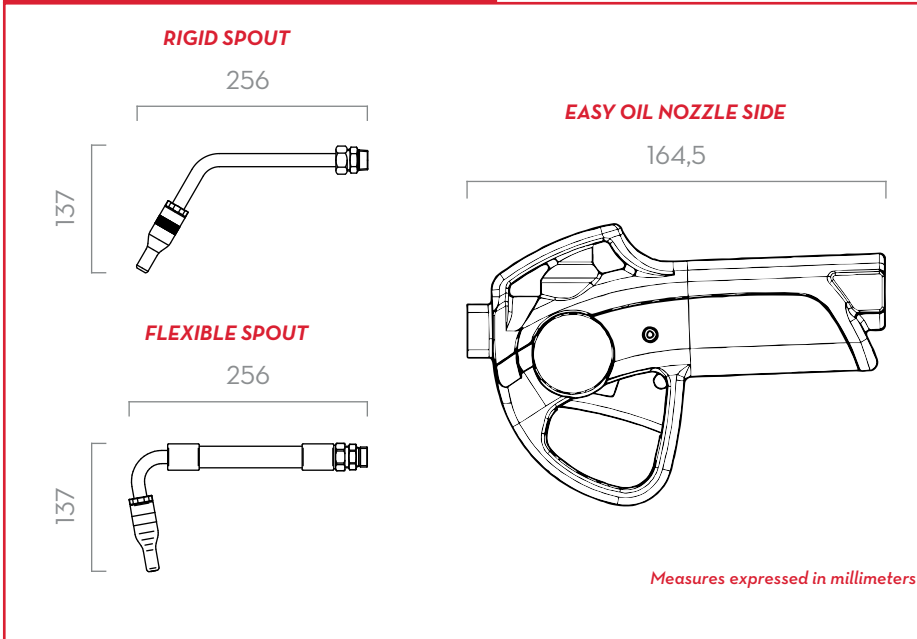


ANTI-SHOCK HANDGRIP

## MATERIALS

- BODY: ALLUMINIUM
- VALVE: NBR, NICKEL PLATED STEEL, BRASS

## DIMENSIONS



## TECHNICAL DATA

CODE	DESCRIPTION	FLUIDS TYPE	FLOW-RATE		WORKING PRESSURE		SPOUT			OUTLET	INLET
			L/MIN	GPM	BAR	PSI	ROTATING	RIGID	FLEXIBLE		
FOO96600A	EASYOIL FF 1/2" X 1/2" BSP		1-30	0,26 - 7,8	70	994	-	-	-	1/2" BSP	1/2" BSP
FOO966130	EASYOIL + SWIVEL 1/2" + RIGID SPOUT		1-30	0,26 - 7,8	70	994	-	YES	-	1/2" BSP	1/2" BSP
FOO966140	EASYOIL + SWIVEL 1/2" + FLEXIBLE SPOUT		1-30	0,26 - 7,8	70	994	-	-	YES	1/2" BSP	1/2" BSP
FOO966150	EASYOIL + SWIVEL 1/2" + ROTATING SPOUT		1-30	0,26 - 7,8	70	994	YES	-	-	1/2" BSP	1/2" BSP

NPT VERSION AVAILABLE

# EASY OIL

MANUAL NOZZLES

107